



**SAFE ELEVATOR**



Email.safeelevator1@gmail.com  
Shop No.4117, Near Durga Mandir Amalidih Raipur (C.G.)  
☎ 62692-82108 , 83191-15352



TRUSTED CARE FOR YOUR  
**ELEVATORS**



**SAFE ELEVATOR**

Lift Installation, Service & Maintenance Company

Email.safeelevator1@gmail.com  
Shop No.4117, Near Durga Mandir Amalidih Raipur (C.G.)  
☎ 62692-82108 , 83191-15352



MOST TRUSTED  
NAME IN  
ELEVATORS CARE  
ONE NAME MEANS  
QUALITY & TRUST



↑ OUR ELEVATOR PRODUCTS

↑ PASSENGER LIFT

↑ PANORAMIC LIFT

↑ HOSPITAL LIFT

↑ HOME LIFT

↑ GOODS LIFT

↑ MRL ELEVATORS

↑ SAFETY FEATURES

**AUTO RESCUE DEVICE**

It should be " In case of a main power supply failure, the lift stopped between two floors is moved to nearest floor in the down ward direction, the automatic door is opened and passengers are out safely"

**INFRARED LIGHT CURTAIN**

Full height infra red curtain with multiple cross-crossing light beams detect the smallest obstruction in door path and stop doors from closing.

**OVER LOAD SENSOR WITH AUDIO VISUAL INDICATION**

On overloading of the lift, car audio-visual indication is provided and doors are kept open till excess load is removed.

**CAR EMERGENCY LIGHT & FAN**

The emergency light is always illuminated in normal condition and switches itself automatically to battery back up in case of power failure as shown in picture. (Block-D) Fan also operates for minimum 20 minutes after power failure.

**EMERGENCY ALARM & 'PUSH TO TALK'**

In case of any emergency or power failure, help can be obtained by alarming or by communicating at lobby through this system which is battery operated and self charging as shown in picture. (Block-E)

**SAFETY IN CASE OF OVER TRAVEL**

Three phase electric power is disconnected from control panel and motor, the moment elevator car moves beyond the limit of top and bottom terminal floors causing immediate application of the brake to bring the elevator to halt.

**SAFETY IN CASE OF ROPE BREAKAGE**

In the elevator of breakage of ropes, elevator speed exceeds the rated speed in the downward direction due to gravitational acceleration. the over speed governor activates the clutch mechanism thereby switching off main controls and jamming the elevator car safety on guide rails.

**CAR FAN AUTOMATIC SLEEP**

Car fan automatically stops when there are no registered floor calls resulting into saving in power and enhancing its life.

**VOICE ANNUNCIATOR WITH MUSIC**

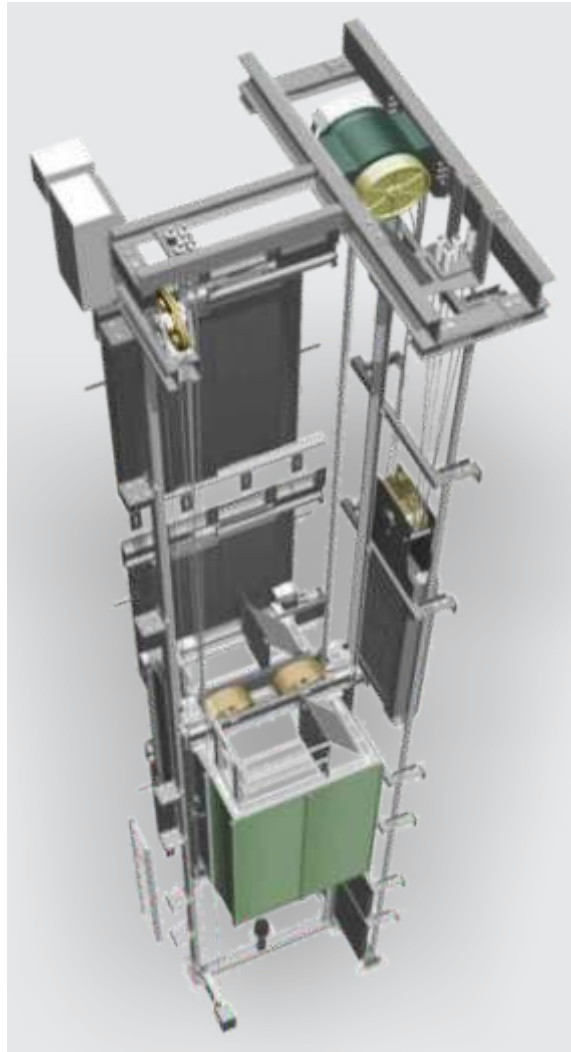
This system provides detailed information to passengers related to next floor, direction of movement, door opening/closing, scheduled operations and other information depending on the building needs. This system features natural electronic voice synthesizers.





## MRL MACHINE

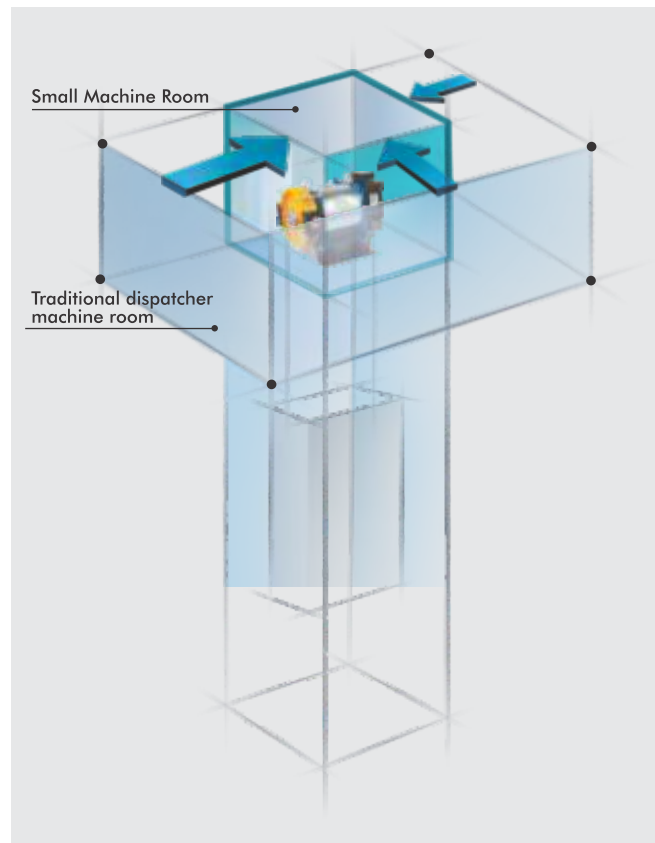
Brings you a revolutionary concept in the field of elevators to give you absolute freedom in designing - MRL -Machine Room Less Elevators! Our exclusive Machine room less elevators brings aesthetic enhancements for you structure.



**LESS SPACE  
LESS ENERGY  
MORE FLEXIBILITY**

### ADVANTAGES

- LATEST TECHNOLOGY IN THE WORLD
- SMOOTHEST TRAVEL
- ABSOLUTE FREEDOM IN BUILDING DESIGNS
- SUBSTANTIAL SAVING ON ELECTRICITY COST
- SAVE THE CONSTRUCTION COST
- MORE SAFE



### RANGE OF HEAVY MRL

**SPEED**  
UP TO 1 MPS

**ROPING**  
2:1

**ROPE DIA**  
10 / 13 / 16 MM

**SHEAVE DIA**  
400 / 520 / 640 MM



GREEN ENVIRONMENTAL PROTECTION



SPACE SAVING



EFFECTIVE AND ENERGY-SAVING



LOW NOISE



PASSENGER CAPACITY **04-26**

LOAD CAPACITY UP TO **5** TONNES

### RANGE OF MRL

**SPEED**  
2.5 MPS

**ROPING**  
2:1

**ROPE DIA**  
8 MM

**SHEAVE DIA**  
320 MM

**SPECIAL FEATURES**  
44 & 66 POLES MOTORS AVAILABLE



# PERSONALIZE YOUR OWN LIFT

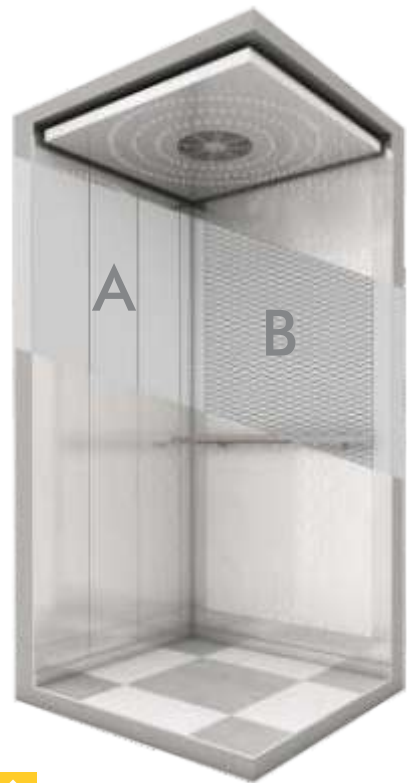
## STEP 1 CHOOSE YOUR LAYOUT



↑ LAYOUT 1



↑ LAYOUT 2



↑ LAYOUT 3



↑ LAYOUT 4

SAFE ELEVATOR

PASSENGER CAPACITY **13-40**

### SPECIAL FEATURE

- AUTO LEVELING TO ENSURE SMOOTH MOVEMENT OF PASSENGERS
- LARGE OPENING OPTIONS FOR EASY ACCESS
- RESCUE SYSTEM FOR POWER CUTS
- NON STOP FUNCTION FOR EMERGENCIES
- DESIGNS TO ADD BRIGHTNESS IN THE HOSPITAL
- 24X7 SERVICE



# PERSONALIZE YOUR OWN LIFT

## STEP 2 CHOOSE YOUR DOOR



01 SS AUTO DOOR



02 SS TELESCOPIC DOOR



03 GLASS DOOR



04 SMALL VISION AUTO DOOR



05 FULL GLASS DOOR



06 MANUAL TELESCOPIC DOOR

PASSENGER CAPACITY **08-20**

- Made from S.S./M.S. with vision panel.
- Color-Powder coated, Elegant looks, Light in weight and variable speed.
- Controller Full Proof to voltage (PLC or Solid state) with fully collective- selective system.
- AC VVVF drive for jerk free operation & for variable speed.
- Overload indication and Auto Door announcing system.
- Avail Inverter facility for single base at time of Power failure.
- Push Button Luminous type highly attractive as well as durable.
- Facility Floor Position Indication at the floors as well as in cabin.





## HOSPITAL ELEVATOR

These automatic lifts are built specially for usage by hospitals. Stretchers can be accommodated. Cabin if required - can be washed or fumigated there is no jerk in starting or stopping. The range from 13 persons to 40 persons with the minimum size beginning from 3' x 7'. The cabin walls can be of M. S. Painted, M. S. Powder coated or hairline brush finished stainless steel collapsible channel gates or swing doors with glass vision windows can be provided. Swing door be varied from floor to floor to suit the decor. Automatic doors can also be provided.



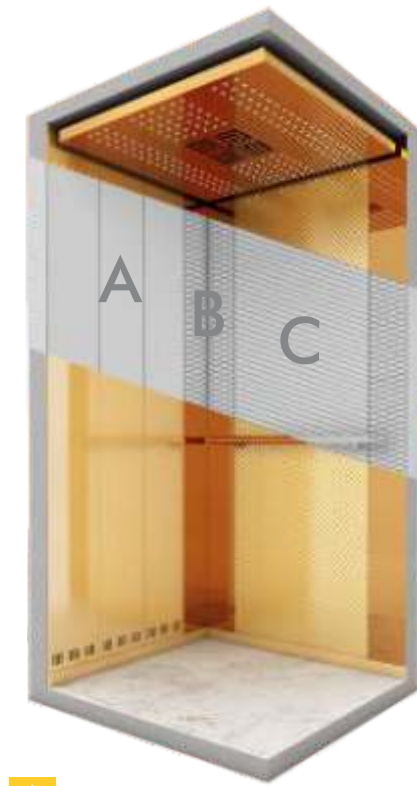
↑ LAYOUT 5



↑ LAYOUT 6



↑ LAYOUT 7



↑ LAYOUT 8



## SS SHEET & POWDER COATING OPTIONS

### PREMIUM SHEETS

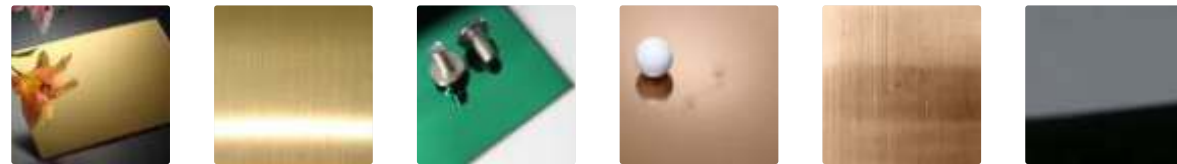


S01 S02 S03 S04 S05 S06

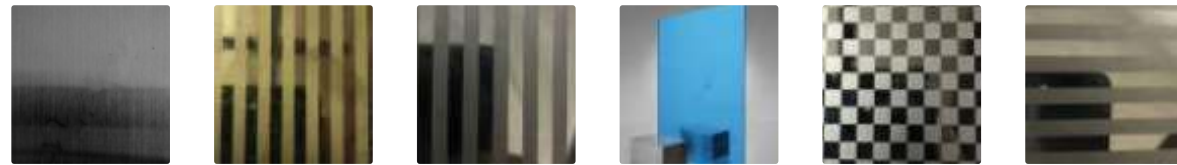


S07 S08 S09 S10 S11 S12

### SUPER PREMIUM SHEETS

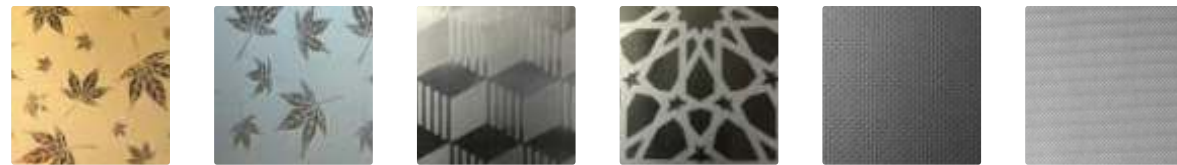


S13 S14 S15 S16 S17 S18



S19 S20 S21 S22 S23 S24

### LUXURIOUS SHEETS



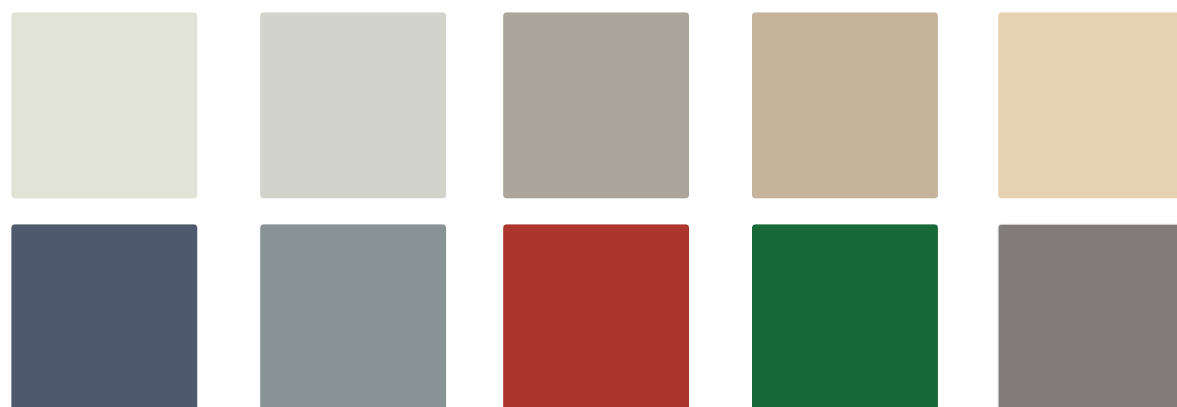
S25 S26 S27 S28 S29 S30



S31 S32 S33 S34 S35 S36

### POWDER COATING

#### PREMIUM SHEETS



AND MANY MORE...



## ELEVATOR SYSTEM





MODEL 01



INTERNAL WALL LAYOUT

Layout 01  
Material : SS Hair Line

FLOORING

PATTERN 01  
MATERIAL : PVC Material

CEILING

DESIGN 02  
MATERIAL : SS Hair Line



MODEL 02



INTERNAL WALL LAYOUT

Layout 02  
Material : MS Powder Coated

FLOORING

PATTERN 01  
MATERIAL : PVC Material

CEILING

DESIGN 01  
MATERIAL : MS Powder Coated



TOUCH OPTION

SAFE ELEVATOR

SAFETY TIPS FOR ELEVATOR USERS

- Do not overcrowd the elevator. Exceeding the capacity may cause the elevator to stop or malfunction.
- Do not use the elevator as a freight elevator.
- Do not use the elevator as a storage area for goods or materials.
- Do not use the elevator as a means of transport for goods or materials.
- Do not use the elevator as a means of transport for people.
- Do not use the elevator as a means of transport for people.
- Do not use the elevator as a means of transport for people.
- Do not use the elevator as a means of transport for people.
- Do not use the elevator as a means of transport for people.



Capacity  
6 Passengers, 488Kg



TOUCH TYPE - 01

SAFE ELEVATOR

SAFETY TIPS FOR ELEVATOR USERS

- Do not overcrowd the elevator. Exceeding the capacity may cause the elevator to stop or malfunction.
- Do not use the elevator as a freight elevator.
- Do not use the elevator as a storage area for goods or materials.
- Do not use the elevator as a means of transport for goods or materials.
- Do not use the elevator as a means of transport for people.
- Do not use the elevator as a means of transport for people.
- Do not use the elevator as a means of transport for people.
- Do not use the elevator as a means of transport for people.
- Do not use the elevator as a means of transport for people.
- Do not use the elevator as a means of transport for people.



Overload  
Auto Evacuation ON



TOUCH TYPE - 02

SAFE ELEVATOR

SAFETY TIPS FOR ELEVATOR USERS

- Do not overcrowd the elevator. Exceeding the capacity may cause the elevator to stop or malfunction.
- Do not use the elevator as a freight elevator.
- Do not use the elevator as a storage area for goods or materials.
- Do not use the elevator as a means of transport for goods or materials.
- Do not use the elevator as a means of transport for people.
- Do not use the elevator as a means of transport for people.
- Do not use the elevator as a means of transport for people.
- Do not use the elevator as a means of transport for people.
- Do not use the elevator as a means of transport for people.
- Do not use the elevator as a means of transport for people.

10 Passengers, 888 KG



TOUCH TYPE - 03



# PERSONALIZE YOUR OWN LIFT

## STEP 5 CHOOSE YOUR COP-LOP

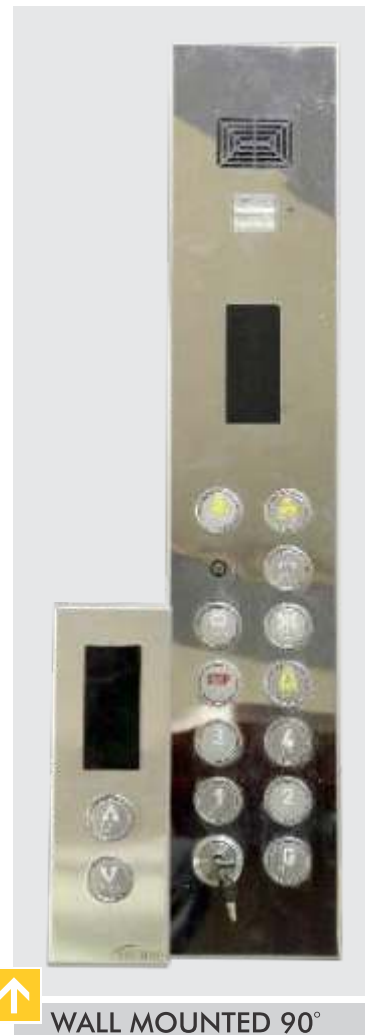
SAFE ELEVATOR

### ↑ BUTTON OPTION

### CAR OPERATING PANEL & LANDING OPERATING PANEL



↑ JAGUAR



↑ WALL MOUNTED 90°



↑ VOYAGER

### ↑ MODEL 03

PASSENGER CAPACITY **03-30**



#### INTERNAL WALL LAYOUT

Layout 03  
Material : SS Hair Line  
SS Designer

#### FLOORING

PATTERN 04  
MATERIAL : PVC Material

#### CEILING

DESIGN 07  
MATERIAL : SS Hair Line

### ↑ MODEL 04



#### INTERNAL WALL LAYOUT

Layout 04  
Material : SS Hair Line  
SS Designer

#### FLOORING

PATTERN 02  
MATERIAL : Marble Finish

#### CEILING

DESIGN 04  
MATERIAL : SS Hair Line



MODEL 05



**INTERNAL WALL LAYOUT**

Layout 05  
Material : SS Hair Line  
SS Designer  
& Mirror

**FLOORING**

PATTERN 01  
MATERIAL : Marble Finish

**CEILING**

DESIGN 05  
MATERIAL : Black Mirror



MODEL 06



**INTERNAL WALL LAYOUT**

Layout 06  
Material : MS Powder Coated  
Wooden Finish  
& Mirror

**FLOORING**

PATTERN 05  
MATERIAL : Marble Finish

**CEILING**

DESIGN 03  
MATERIAL : MS Powder Coated



DESIGN 01



DESIGN 02



DESIGN 03



DESIGN 04



DESIGN 05



DESIGN 06



DESIGN 07



DESIGN 08



DESIGN 09



DESIGN 10



DESIGN 11



DESIGN 12



## GENERAL PANORAMIC ELEVATOR

### WHAT IS CAPSULE ELEVATOR, HOW TO CHOOSE A CAPSULE ELEVATOR

Capsule Elevator is essentially installed at a place where elevation of building is to be enhanced with display of moving lift and passenger is provided with panoramic view of surroundings. Capsule elevator normally comes in 5 and 3 Glass panel.

Capsule Elevator is normally preferred in shopping malls (to give view of items displayed), 5 star hotels (to provide lobby view) and high rise residential buildings.



07 SWING DOOR



08 COLLAPSIBLE DOOR



09 IFG DOOR

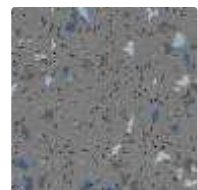
AVAILABLE IN DECORATIVE SHEET & POWDER COATING SHEET AS WELL

# PERSONALIZE YOUR OWN LIFT

## STEP 3 CHOOSE YOUR FLOORING

SAFE ELEVATOR

### PVC MATERIALS



M-1



M-2



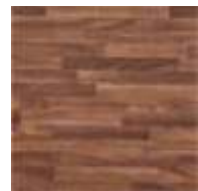
M-3



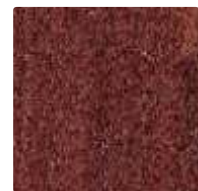
M-4

and many more option...

### PVC WOODEN MATERIALS



M-5



M-6



M-7



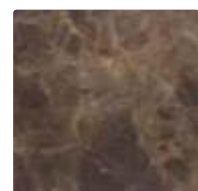
M-8

and many more option...

### PVC MARBLE FINISH MATERIALS



M-9



M-10



M-11



M-12

and many more option...

### PVC CARPET FINISH MATERIALS



M-13



M-14



M-15

and many more option...

### LUXURIOUS OPTION

- REAL GLASS FLOORING
- REAL WOOD FLOORING
- REAL MARBLE FLOORING

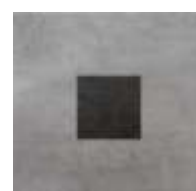
### FLOORING PATTERN AVAILABLE IN MARBLE & PVC



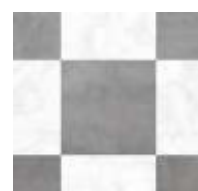
PATTERN 01



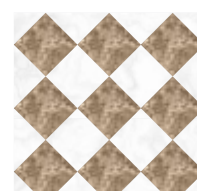
PATTERN 02



PATTERN 03



PATTERN 04



PATTERN 05

### MODEL 07



#### INTERNAL WALL LAYOUT

Layout 07  
Material : Gold Hair Line & Mirror

#### FLOORING

PATTERN 01  
MATERIAL : Real White Marble

#### CEILING

DESIGN 09  
MATERIAL : Gold Mirror

PASSENGER CAPACITY **03-30**

### MODEL 08



#### INTERNAL WALL LAYOUT

Layout 08  
Material : Black Hair Line  
Black Glass

#### FLOORING

PATTERN 01  
MATERIAL : Real Wood

#### CEILING

DESIGN 08  
MATERIAL : Black Mirror